



GMT MONTHLY MEMBERSHIP PROGRESS REPORT

Results as of: 6/30/2020

Multiple District 23

LOCATION: CONNECTICUT

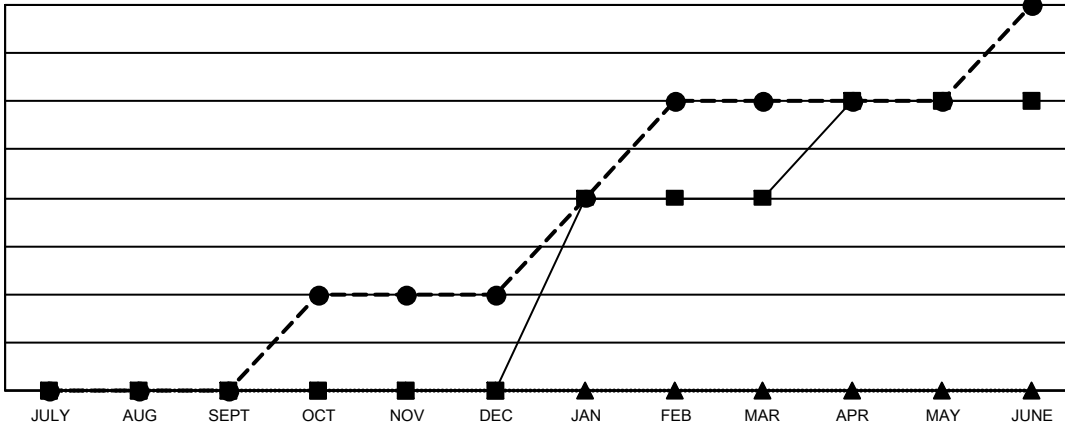
GMT: OPEN

GMT CA 1

| Clubs | | | |
|-----------------------|---------------|-----------|---------------|
| RESULTS FOR 2019-2020 | | | |
| QUARTER | NEW CLUB GOAL | NEW CLUBS | DROPPED CLUBS |
| JULY/AUG/SEPT | 0 | 0 | 1 |
| OCT/NOV/DEC | 0 | 1 | 1 |
| JAN/FEB/MAR | 2 | 2 | 1 |
| APR/MAY/JUNE | 1 | 1 | 1 |

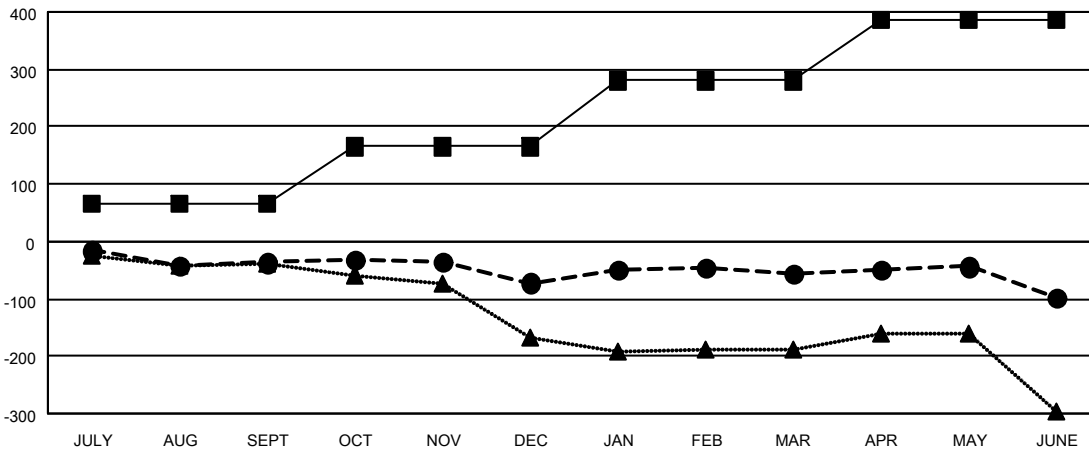
| Members | | | |
|-----------------------|------------------------|----------------------|--|
| RESULTS FOR 2019-2020 | | | |
| QUARTER | MEMBER GROWTH NET GOAL | MEMBER GROWTH ACTUAL | DROPPED MEMBERS ACTUAL (including transfers) |
| JULY/AUG/SEPT | 65 | 76 | 108 |
| OCT/NOV/DEC | 100 | 116 | 146 |
| JAN/FEB/MAR | 115 | 158 | 134 |
| APR/MAY/JUNE | 105 | 146 | 170 |

GOALS AND ACTUAL NEW CLUBS CUMULATIVE



- - CURRENT YEAR GOALS FOR NEW CLUBS
- - CURRENT YEAR ACTUAL NEW CLUBS
- ▲ - LAST YEAR ACTUAL NEW CLUBS

GOALS AND ACTUAL MEMBERS CUMULATIVE



- - MEMBER GROWTH NET GOAL
- - MEMBER GROWTH ACTUAL
- ▲ - LAST YEAR MEMBERSHIP ACTUAL

| | | |
|------------------------|---|-------------------------------------|
| DROPPED CLUBS: 4 | 103 CLUBS OF 161 ADDED 1 OR MORE NEW MEMBERS | GENDER DISTRIBUTION |
| | | MALE 3,088 (65.09%) |
| | | FEMALE 1,656 (34.91%) |
| DROPPED MEMBERS | CLICK HERE FOR CUMULATIVE MEMBERSHIP DATA | TOTAL FAMILY UNIT MEMBERS 869 |
| DECEASED 55 | | FAMILY MEMBERS PAYING HALF DUES 453 |
| CLUB CANCELLED 8 | | |
| OTHER 493 | | |
| TOTAL 556 | | |